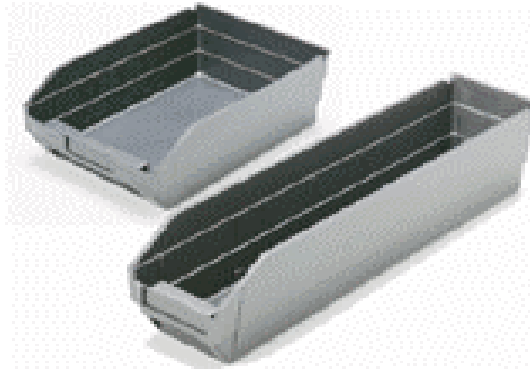




Shelf Bins



Quantum Conductive Shelf Bins are a permanent solution for storage and transportation of electronic components and parts assemblies, and loaded circuit boards. These containers are molded with a carbon filled copolymer polypropylene material, which protects sensitive electronic components from typical electromagnetic interference (EMI). The Conductive material provides a barrier, which these fields cannot penetrate and prevent the build of electrostatic charge. The conductive containers are permanently conductive and unaffected by normal cleansers. These tough, durable containers are designed for 12", 18" and 24" deep shelves.

Performance Features:

- Available in twelve sizes.
- Extra thick reinforced wall for rigidity.
- Bins nest when empty for easy storage.
- Wide open hopper fronts allow easy access.
- Slotted label holders for easy identification.
- Unaffected by humidity.
- Bins are highly dissipative.
- Electrostatic Decay Rate is tested to meet Mil Spec Mil-B-81075B at less than 0.1 seconds.
- Surface resistivity is less than 10^5 ohms-per-square when tested per ASTM-D257.
- Water proof, impervious to most chemicals and unaffected by grease and oils.

5228 US HWY 421 N • WILMINGTON, NC 28401
• 800-537-0351 • 910-763-8111 (tel) • 800-379-9903 • 910-763-5664 (fax) •
sales@allspec.com (email) • www.allspec.com (web)