



SP-01P with Optional Jaw

SP-01P Squeeze-Eze™ Power Pack

This is one of our most powerful tools in the electronics group (575 lbs. force @ 80 psi), designed to be used with jaw sets listed below. The tool is small (5 1/2" long x 1 1/2" diameter) lightweight (11 oz.) and can be operated at air pressures of 60 - 100 psi. A built in adjusting screw controls the opening of the jaw sets. All power packs sold less jaws, order separate.

A foot operated model is available (SP-01PF) which includes two (2) 5 foot air hoses and hex key for use with optional A-202 bench stand. An optional four way footswitch is available (Model 105)

SP-02P Squeeze-Eze™ Power Pack

SP-02P is designed to use the identical jaw sets as the SP-01P, but delivers considerably more power for tougher applications. Made of durable aluminum, the tool is small (5 1/2" long x 1 3/4" diameter), Lightweight (13 oz.) and can be operated at air pressures of 60-100 psi. SP-02P (850 lbs. of cutting force) can cut up to 0.10" soft steel wire.

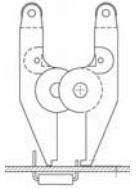
A foot operated model, as shown, (SP-02PF) includes two (2) 5 foot air hoses and hex key for use with our optional work station or A-202 bench stand. An optional four way footswitch is available (Model #105).

SP-02PF with Optional Jaw



Cut and Crimp Style Jaws

These jaws shear soft wire at a specified "rise" distance above the working surface and flatten the rise so it is mechanically secure before soldering. Jaws identified by the suffix "SR" do not include the crimp feature. Special order on "SR" can be furnished to cut and rise distances from 0.03" to 0.06" (0.76 to 1.5 mm).



CC-1 \ CC-1SR



Max. Soft Wire	0.05" (1.27 mm)
Rise	0.04" (1.1 mm)
Angle	45°
Length of Cut	0.37" (9.39 mm)
Max. Tip Opening	0.15" (3.81 mm)

MCC-1 \ MCC-1SR



Max. Soft Wire	0.03" (0.76 mm)
Rise	0.03" (0.76 mm)
Angle	45°
Length of Cut	0.12" (3.04 mm)
Max. Tip Opening	0.20" (5.08 mm)

MCC-2 \ MCC-2SR



Max. Soft Wire	0.03" (0.76 mm)
Rise	0.03" (0.76 mm)
Angle	90°
Length of Cut	0.12" (3.04 mm)
Max. Tip Opening	0.25" (6.35 mm)

SJ-1A



For use as a holding pliers or can be machined to suit special requirements for cutting, crimping or holding. Jaws are 0.30" (7.62 mm) thick. Max. tip opening 0.39" (9.90 mm)

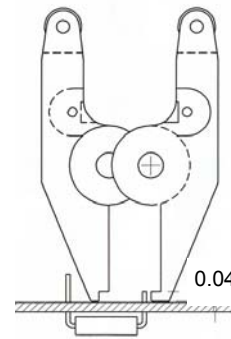
All Simonds jaws can be factory re-sharpened for longer life and reduced production costs. Special jaws may be manufactured for special operations. Consult your local distributor.

SQUEEZE-EZE™ JAWS (cont.)

For use with SP-01P or SP-02P Power Packs

Dyke Type Jaws

These jaws are for cutting wires flush or semi-flush. All jaws are secured in the housing by a shouldered pivot-screw with recessed hex head and can be reversed to facilitate right or left handed use. "CH" indicates case hardened jaw sets. As with all Simonds jaw sets, they may be factory re-sharpened for extended life and lower production costs.



Rendering of cut and crimp style jaws.

0.04 Rise Wire After Cut

CD-1 \ CD-11 \ CD-1CH



Max. Soft Wire	0.06" (1.5 mm)
Semi-Flush Cut-CD-1	.007" (0.18 mm)
Flush Cut-CD-11	.007" (0.18 mm)
Angle	45°
Length of Cut	0.43" (11 mm)
Max. Tip Opening	0.20" (5 mm)

CD-3 \ CD-31 \ CD-3CH



Max. Wire	0.05" (1.2 mm)
Semi-Flush Cut-CD-3	.007" (0.18 mm)
Flush Cut—CD-31	.007" (0.18 mm)
Angle	15°
Length of Cut	0.83" (21 mm)
Max. Tip Opening	0.30" (7.63 mm)

CD-4CH



Max. Soft Wire	0.08" (2 mm)
Semi-Flush Cut	Center Cut
Angle	N/A
Length of Cut	0.50" (12.7 mm)
Max. Tip Opening	0.19" (4.8 mm)

CD-6



Plastic Only	0.187" (4.75 mm)
Full Flush Cut	Tapered Outside Edge
Angle	15°
Length of Cut	0.875" (22.22 mm)
Max. Tip Opening	0.484" (12.25 mm)

HCC-1



Max. Soft Wire	0.06" (1.52 mm)
Rise	0.04" (1.02 mm)
Angle	45°
Length of Cut	0.19" (4.8 mm)
Max. Tip Opening	0.10" (2 mm)

HMCC-1



Soft Copper Wire	.031" (7.8 mm)
Rise	.041" (1.04 mm)
Angle	45°
Length of Cut	0.13" (3.3 mm)
Max. Tip Opening	0.20" (5 mm)

FS-1/FS-1CH/Carbide



Filament shears for cutting fine wire, nickel ribbon or soft wire of any metal up to 0.13" diameter (3.3 mm). Jaws are 0.75" (19 mm) long. Maximum tip opening 0.21" (5.3 mm)

PC-311F



PC Tab Cutter	0.05" (1.27 mm)
Flush Cut	
Angle	25°
Length of Cut	0.45" (11.45 mm)
Max. Tip Opening	0.26" (6.60 mm)

Most Simonds jaws are available with carbide inserts. Please consult factory for pricing and availability.

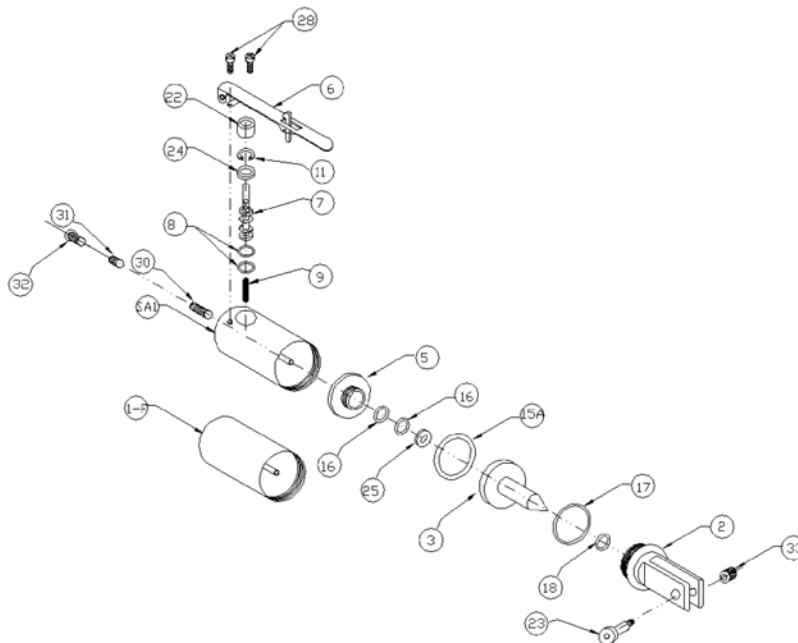
Simonds Inc. has a full team of engineers to help with special needs. Custom designed tools and jaws are an integral part of Simonds business. Use the "Request for Engineering" form found on our web site to help develop a tool to make your manufacturing process easier.

Simonds web site: www.simonds-inc.com.

All-Spec Industries
Wilmington, NC

Ph: 800-537-0351
Fx: 800-379-9903

Web: www.all-spec.com
Email: sales@all-spec.com



PARTS LIST FOR SP-01P and SP-01PF

SA-1	PISTON HOUSING*	SA-1-01
1-F	PISTON HOUSING REMOTE	SA-1-01F

PARTS LIST

DRWG. NO.	DESCRIPTION	PART NO.
2	JAW HOUSING ASSEMBLY	SA-2-01
3	PISTON SHAFT	3-01P
5	PISTON LOCK NUT	5-01
7	SPOOL	7-01**
8	SPOOL O'RING (2 required)	8-01-K10***
9	SPOOL SPRING	9-01**
11	SNAP RING	11-01**
15A	O-RING PISTON SEAL	15A-01***
16	O-RING (2 required)	16-01-K10***
17	O-RING	17-01-K10***
18	O-RING	18-01***
22	VALVE SPACER	22-01**
23	PIVOT SCREW	23-01
24	VALVE WASHER	24-01**
25	PISTON WASHER	25-01
28	SCREW	28-01-K10**
30	ADJUSTING SCREW	30-01-K10
31	LOCK SCREW	31-01-K10
32	CAP SCREW	32-01
33	INSERT NUT	33-01
40	DUAL ACTION LEVER (safety)	DA-1**

* Sold with trigger assembly, air valve

** Items not used in SP-01PF

*** Only sold as part of O-ring repair kit - #01- 001-KIT
ACCESSORIES

102-5	5 FT HOSE 1/8"X1/4" FITTING	102-5****
104-	HANGER BRACKET	104

****Hose sent with power pack, two hoses sent with SP-01PF

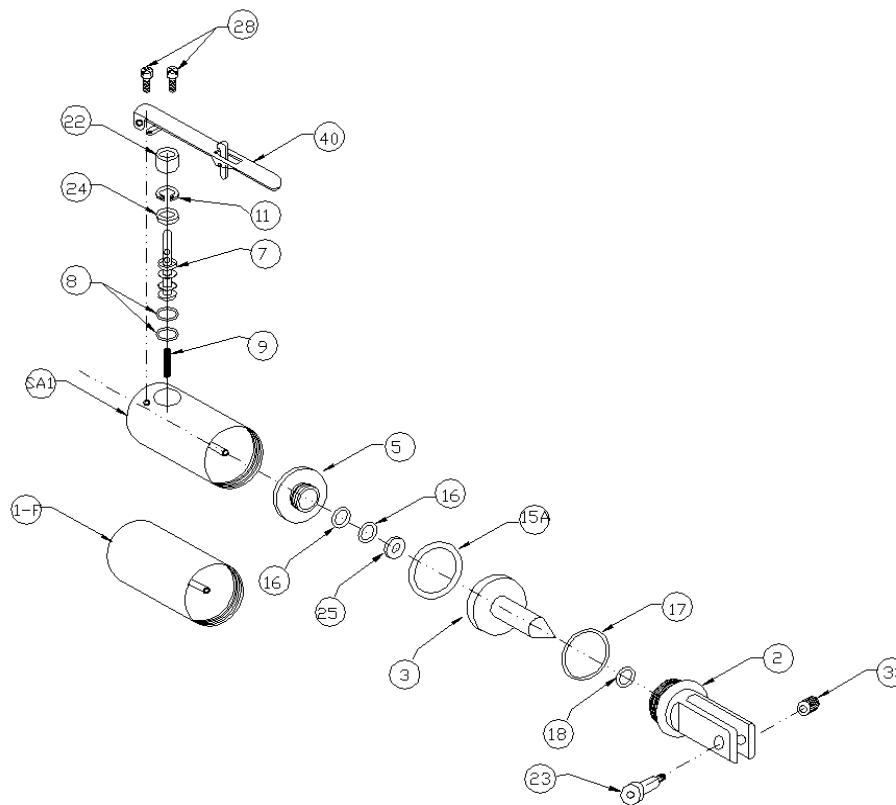


Distributed by:

All-Spec Industries
Wilmington, NC

Ph: 800-537-0351
Fx: 800-379-9903

Web: www.all-spec.com
Email: sales@all-spec.com



PARTS LIST FOR SP-02P and SP-02PF

SA-1	PISTON HOUSING*	SA-1-02
1-F	PISTON HOUSING REMOTE	SA-1-02F

PARTS LIST

DRWG. NO.	DESCRIPTION	PART NO.
2	JAW HOUSING	SA-2-02
3	PISTON SHAFT PLASTIC	3-02P
5	PISTON LOCK NUT	5-02
7	SPOOL	7-02**
8	SPOOL O'RING (2 required)	8-01-K10***
9	SPOOL SPRING	9-01**
11	SNAP RING	11-01**
15A	O-RING PISTON SEAL	15A-02***
16	O-RING (2 required)	16-01-K10***
17	O-RING	17-02-K10***
18	O-RING	18-01***
22	VALVE SPACER	22-02**
23	PIVOT SCREW	23-01
24	VALVE WASHER	24-01**
25	PISTON WASHER	25-01
28	SCREW	28-01-K10**
33	INSERT NUT	33-01
40	DUAL ACTION LEVER (safety)	DA-1**

* Sold with trigger assembly, air valve

** Items not used in SP-02PF

*** Only sold as part of o-ring repair kit - #02- 002-KIT

ACCESSORIES

102-5	5 FT HOSE 1/8"X1/4" FITTING	102-5****
104-	HANGER BRACKET	104

****Hose sent with power pack, two hoses sent with SP-02PF



Distributed by:

All-Spec Industries
Wilmington, NC

Ph: 800-537-0351
Fx: 800-379-9903

Web: www.all-spec.com
Email: sales@all-spec.com