

PLEXTON® CONTAINERS

Add heavy duty performance to a variety of extreme applications.

These fiberglass-reinforced containers feature Stack-N-Nest® design, consistent tare weight, smooth outside surface and radius angles for easy and safe handling. All Plexton containers, hoppers and trays can be manufactured in materials for flame retardance, food grade, or ESD protection. Plexton containers are your ideal solution for heavy-duty storage, work-in-progress and distribution applications.



Casters can be added to underside of cover to create a custom-fit dolly (DOC) or directly to the container for greater mobility (TSN).

PLEXTON CONTAINERS WITHSTAND:

- Extreme cold temperatures to -60° F
- Extreme heat up to 250° F (continuous) and 300° F (intermittent)
- Fully autoclavable
- Extreme weight up to 500 lbs. per container, bottom container in stack supports up to 3,000 lbs
- Resistant to most oils, moisture, chemicals and solvents, not affected by radiation
- Available with or without a wire-reinforced rim



Plexton® Containers are optimal for extreme conditions.

PLEXTON® CONTAINERS



PLEXTON CHARACTERISTICS:

- High impact, compressive, flexural and flexible strength
- Excellent chemical resistance
- High volume and surface resistivity
- High dielectric strength
- High arc and arc-track resistance
- Excellent microwave characteristics



CSN1610
(Covers available in various sizes)

Plexton Stack-N-Nest Containers

Model	Outside Dimensions L x W (in)		Inside Dimensions L x W (in)		Height (in)	Weight (lb)	Cover Model*	Dolly Model*	Carton Quantity
	Top	Bottom	Top	Bottom					
SN1610-5	17.9 x 10.8	16.6 x 9.6	15.9 x 10.1	14.3 x 9.3	5.0	3.0	CSN1610-1	DOC1610-1	10
SN1812-6	19.8 x 12.8	18.3 x 11.4	18.1 x 11.9	16.3 x 11.3	6.0	3.8	CSN1812-1	DOC1812-1	10
SN1812-8	20.6 x 13.0	18.8 x 11.1	18.0 x 12.3	16.0 x 11.0	8.0	5.2	CSN2013-1	DOC2013-1	10
SN2010-7	24.1 x 11.4	21.9 x 9.9	20.0 x 10.7	19.4 x 9.8	6.9	4.6	CSN2010-1	DOC2010-1	10
SN2010-9	24.1 x 11.4	21.8 x 9.9	20.0 x 10.6	19.1 x 9.7	9.0	5.2	CSN2010-1	DOC2010-1	10
SN2214-5	24.3 x 14.8	22.3 x 12.9	21.7 x 14.0	19.4 x 12.8	5.1	4.9	CSN2214-1	DOC2214-1	8
SN2214-8	24.3 x 14.8	22.3 x 12.9	21.5 x 13.9	19.4 x 12.6	8.0	6.6	CSN2214-1	DOC2214-1	8
SN2217-6	25.3 x 18.1	23.3 x 16.1	21.4 x 18.1	21.0 x 15.9	6.1	6.5	CSN2217-1	DOC2217-1	10
SN2217-10	25.3 x 18.1	23.3 x 16.1	22.8 x 17.3	21.0 x 15.9	10.1	8.9	CSN2217-1	DOC2217-1	5
SN2419-14	27.5 x 19.9	24.6 x 17.1	23.1 x 18.9	20.9 x 17.1	14.1	12.3	CSN2419-1	DOC2419-1	5
SN2713-7	29.6 x 13.8	28.1 x 12.3	26.7 x 12.9	25.0 x 12.0	7.0	6.3	N/A	N/A	10
SN2716-11	30.6 x 16.9	27.9 x 14.1	26.3 x 15.9	24.9 x 13.9	11.1	11.1	CSN2716-1	DOC2716-1	5
SN3023-8	34.1 x 24.0	31.8 x 21.8	30.1 x 21.6	28.6 x 20.6	8.1	13.3	N/A	N/A	5
SN3919-14	42.5 x 20.1	39.8 x 17.3	38.1 x 19.0	35.3 x 17.1	14.1	20.4	CSN3919-1	DOC3919-1	N/A

Available Stocked Colors: Red Green Lt. Yellow Grey Lt. Blue

*CSNs and DOCs only available in grey.

PLEXTON® TRAYS & HOPPERS

Boost picking and assembly efficiency with heavy-duty hoppers and trays.

Get high density storage and quick access to your product with Plexton Hoppers & Trays. These containers give you all of the strength and tough characteristics of our Plexton Stack-N-Nest containers with the ability to pick and visually inspect the contents. Assembly Trays are ideal for many applications, such as industrial, confection, electronic, distribution and work-in-process.

Plexton Assembly Trays

Model	Outside Dimensions (in)			Weight (lb)	Carton Quantity
	L	W	H		
ASSEMBLY TRAY*					
TR1812-1	18.0	12.0	1.0	1.8	10
TR1814-1	18.0	14.0	1.0	1.8	10
TR2015-1	20.4	15.1	1.0	1.9	10
TR2618-1	25.8	17.8	1.1	3.0	10

Available Stocked Colors: ● Grey

CNO TRAYS					
CNO65-1	6.3	4.9	0.3	0.19	-
CNO96-1	9.8	6.2	0.4	0.23	-
CNO118-1	11.9	8.8	0.4	0.60	-
CNO129-1	12.4	9.8	0.4	0.62	-

Available Stocked Colors: ● Grey ● Lt. Blue

CSN TRAYS					
CSN1610-1	17.9	10.7	1.0	2.0	-
CSN1812-1	19.8	12.6	1.1	1.8	-
CSN2013-1	20.6	13.0	1.1	2.3	-
CSN2010-1	24.0	11.4	1.2	2.2	-
CSN2214-1	24.1	14.7	1.2	2.9	-
CSN2217-1	25.3	18.1	1.3	3.2	-
CSN2419-1	27.4	19.9	1.3	4.7	-
CSN2716-1	30.6	16.8	1.3	3.8	-
CSN3919-1	42.4	20.0	1.3	8.3	-

Available Stocked Colors: ● Grey

*Plexton Assembly Trays are also stocked in ESD-Safe material. (See pg. 36).

HEAVY DUTY PLEXTON® HOPPER BINS

- Front label area accommodates adhesive labels
- Nest within their own dimensions and provide positive-lock stacking
- Works well with Plexton Container Racks (See pg. 28)
- Designed to work with 18" and 24" shelving (See pg. 19)
- Manufactured in fiberglass-reinforced polyester

Plexton Hopper Front Containers

Model	Outside Dimensions L x W (in)		Inside Dimensions L x W (in)		Height (in)	Weight (lb)	Carton Quantity
	Top	Bottom	Top	Bottom			
SH1811-7	18.1 x 11.4	13.1 x 9.9	16.0 x 8.0	12.8 x 7.5	7.6	3.8	10
SH2411-8	24.0 x 11.4	19.2 x 9.2	21.5 x 8.8	19.0 x 7.6	7.9	5.1	10
SH2416-8	24.1 x 16.3	19.1 x 14.4	21.8 x 12.9	18.8 x 11.6	8.0	7.0	5
HB2012-9*	20.5 x 12.3	16.5 x 10.6	16.5 x 10.7	16.1 x 10.4	9.3	4.8	6
SH2012-9*	20.5 x 12.3	16.5 x 10.6	16.5 x 10.7	16.1 x 10.4	9.3	5.6	6

Available Stocked Colors: ● Red ● Green ● Grey

* Available on a make-to-order basis. Please call for more information.



TR1814-1



CNO65-1



SH2416-8

SH2411-8



HB2012-9

SH1811-7

SH2012-9

NEST-ONLY & STACK-ONLY CONTAINERS

Add efficiency to assembly, work-in-process and picking applications in a wide range of industries.

Plexton® Stack-Only and Nest-Only Containers are ideal for storing, moving and shipping small parts, as well as for autoclaves, healthcare and x-ray/security applications. Thin-wall design and construction gives maximum strength while remaining lightweight.

NEST-ONLY & STACK-ONLY CONTAINERS

- Accommodate extreme temperature ranges, -60°F to 250°F or 300°F intermittently
- High weight capacity
- Optional covers can also be used as trays (See pg. 17)
- Nest-only containers nest efficiently when empty and stack with covers
- Manufactured in fiberglass-reinforced polyester



NO118-4

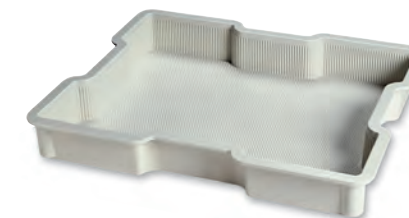
NO65-2



NO1411-4

STACK-ONLY SO2420-3

Cubes a 40 x 48 pallet and is the perfect solution for many confection, industrial, electronic, distribution, storage and work-in-process applications.



SO2420-3

Plexton Nest-Only and Stack-Only Containers

Model	Outside Top Dimensions (in)		Inside Top Dimensions (in)		Height (in)	Weight (lb)	Compatible Cover	Carton Quantity
	L	W	L	W				
Nest-Only Containers								
NO65-2	6.3	4.9	5.9	4.6	2.1	0.3	CNO65-1	48
NO96-2	9.8	6.2	9.3	5.6	2.1	0.7	CNO96-1	48
NO96-4	9.8	6.2	9.3	5.6	4.5	1.2	CNO96-1	16
NO118-4	11.9	8.8	11.3	8.3	4.1	1.6	CNO118-1	10
NO129-2	12.4	9.8	11.9	9.1	2.1	1.5	CNO129-1	22
NO1411-4*	14.6	11.6	13.9	10.9	4.1	1.6	N/A	10

Available Stocked Colors: ● Red ● Green ● Lt. Yellow ● Grey ● Lt. Blue

* NO1411-4 is stocked only in Red, Green and Grey.

Stack-Only Containers

SO2420-3**	24.0	20.0	-	-	3.0	5.5	N/A	N/A
------------	------	------	---	---	-----	-----	-----	-----

** Available on a make-to-order basis. Please call for more information.

Covers for Nest-Only Containers

Model	Dimensions (in)			Weight (lb)	Fits Container Model
	L	W	H		
CNO65-1	6.3	4.9	0.3	0.19	NO65-2
CNO96-1	9.8	6.2	0.4	0.23	NO96-2, NO96-4
CNO118-1	11.9	8.8	0.4	0.60	NO118-4
CNO129-1	12.4	9.8	0.4	0.62	NO129-2

Available Stocked Colors: ● Grey ● Lt. Blue