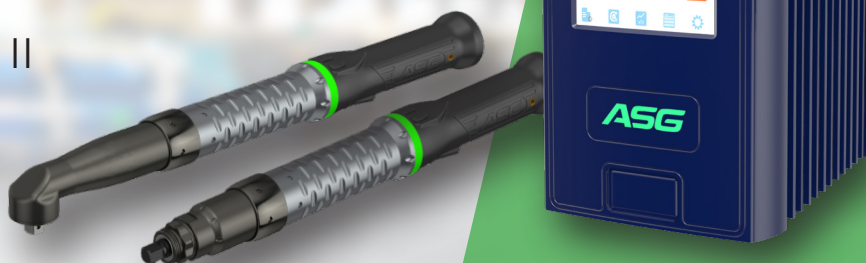




X-PAQ II

CT4500 CONTROLLER

COMPATIBLE WITH X-PAQ II
SD3500 AND SD4500
ELECTRIC SCREWDRIVERS



The **X-PAQ II CT4500** is designed to elevate quality, efficiency, and accuracy in your threaded fastening applications. Engineered for seamless integration with the ergonomic, high power-to-weight ratio X-PAQ II series tools, it supports a wide range of peripherals for process control, automation, and industrial networking.

Intelligent Features for Maximum Productivity Include:

- **Large, Intuitive Touchscreen:** No external software or licenses required
- **Remote Web Interface:** Access data and settings without walking to the floor
- **Seamless Compatibility:** Familiar interface with the X-PAQ product line for easy adoption
- **Powerful Performance:** Supports torque ranges up to 60 Nm
- **99 Tasks & 99 Global Parameters:** High customization for optimized workflows
- **Multi-Language Support:** Adaptable for global operations
- **16 Programmable Inputs and Output:** Enhanced flexibility for automation and process integration
- **Robust Network Connectivity:** Static or dynamic IP address configurations
- **Innovative Thermal Management:** Advanced design pulls heat away from electronics for reliability and durability
- **Multi-Level Security Access:** Protects settings from unintended changes
- **Customizable Data Views & Analytics:** Real-time statistical insights at your fingertips
- **On-Screen Rundown Graphs:** Review and analyze past rundowns instantly
- **Operator-Centric Design:** Customizable tool LED and button behavior for user preference

The X-PAQ II CT4500 is built for the modern manufacturing environment, offering precision control, real-time data access, and seamless integration in a robust, future-ready package.

REQUEST A QUOTE

ASG-JERGENS.COM/PF | asginfo@asg-jergens.com

