



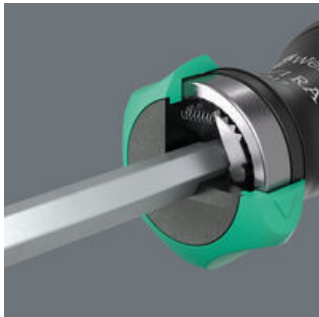
EAN:	4013288233967	Size:	230x70x45 mm
Part number:	05051518001	Weight:	290 g
Article number:	Kraftform Kompakt 27 RA 2	Country of origin:	CZ
		Customs tariff number:	82054000

- The ratchet with fine toothing integrated in the handle allows fast working
- The innovative ratchet mechanism also allows fast "spinning". A real problem solver when there is no resistance from the screw
- Intuitive switching: If I turn the switch clockwise - the ratchet turns clockwise, if I turn the switch counterclockwise - it goes counterclockwise
- Integrated bit magazine with 6x 25 mm bits
- Tough viscous bits for universal use
- Universal holder with stainless sleeve and strong permanent magnet



Kraftform bitholding screwdriver for 1/4" hex drive bits. The ratchet with fine toothing integrated in the handle allows fast working. Switching the screwdriving direction is intuitive: Turn the ring switch clockwise for clockwise screwdriving, turn it counterclockwise for counterclockwise screwdriving. Use position 0 to deactivate the ratchet mechanism for precise working. Includes 6 tough bits for universal use; stored in the bit magazine integrated in the handle. The strong permanent magnet in the 1/4" bit mounting ensures secure holding of the bit. The 2-component Kraftform handle with the combination of hard and soft zones allows for a firm grip and precise working.

Innovative ratchet mechanism



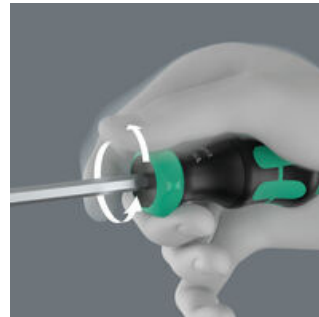
The ratchet with fine toothing integrated in the handle allows fast working. The innovative ratchet mechanism also allows fast "spinning". A real problem solver when there is no resistance from the screw.

Intuitive switching, and deactivation of the ratchet functionality



Intuitive switching of the ratchet mechanism. Turn the switch clockwise for clockwise screwdriving; turn it counterclockwise for counterclockwise screwdriving. Use position 0 to deactivate the ratchet mechanism for precise working.

Ratchet mechanism allows "spinning"



The innovative ratchet mechanism also allows fast "spinning". A real problem solver when there is no resistance from the screw.

Handle with integrated bit magazine



The handle can be opened and thus gives access to the six bits contained in the magazine.

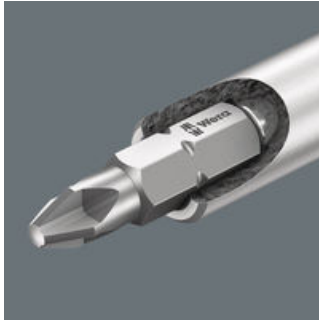
Web link

<https://www.wera.de/en/05051518001>

Wera - Kraftform Kompakt 27 RA 2
05051518001 - 4013288233967

Wera Werkzeuge GmbH
Korzerter Straße 21-25
D-42349 Wuppertal
Tel: +49 (0)2 02 / 40 45-0
E-Mail: info@wera.de

Universal holder with stainless
steel sleeve



With stainless steel sleeve and
strong permanent magnet.

Tough bits



Tough Wera bits prevent the tip
from breaking prematurely. Z-bits
usually are the bit for universal
screwdriving applications.

Web link

<https://www.wera.de/en/05051518001>

Wera - Kraftform Kompakt 27 RA 2
05051518001 - 4013288233967

Wera Werkzeuge GmbH
Korzerter Straße 21-25
D-42349 Wuppertal
Tel: +49 (0)2 02 / 40 45-0
E-Mail: info@wera.de

Kraftform Kompakt 27 RA 2, 6 pieces

Kraftform Kompakt 20 with ratchet functionality



Set contents:

851/1 Z bits, PH 1 x 25 mm



05072070001
05072072001

1x PH 1 x 25 mm
1x PH 2 x 25 mm

800/1 Z bits, 1 x 5.5 x 25 mm



05072059001
05072061001

1x 1 x 5.5 x 25 mm
1x 1.2 x 6.5 x 25 mm

868/1 Z Square-Plus bits, # 1 x 25 mm



05066405001
05066410001

1x # 1 x 25 mm
1x # 2 x 25 mm

Web link

<https://www.wera.de/en/05051518001>

Wera - Kraftform Kompakt 27 RA 2
05051518001 - 4013288233967

Wera Werkzeuge GmbH
Korzerter Straße 21-25
D-42349 Wuppertal
Tel: +49 (0)2 02 / 40 45-0
E-Mail: info@wera.de